

RHINO TIRE Operation Manual

CHAPTER ONE - Preparation of the tire



Fig.1



Fig. 2

Step. 1

Using the Key (fig.1)
affix the tire to machine so it will be
at maximum balance. (fig.2)



Fig. 3



Fig. 4

Step. 2

Calibrate the metal brush.
(fig.3) & (fig.4)



Fig. 5



Fig. 6

Step. 3

Rotate the tire on maximum reverse speed.
(set to 50 counter clockwise)
(fig.5) & (fig.6)



Fig. 7

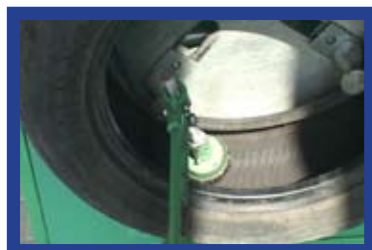


Fig. 8

Step. 4

Remove the non stick layer from the rubber by inserting the metal brush inside the rotating tire and scrape it. (Be aware not to touch the rotating tire holder bars) (Fig.7-8)



Fig. 9



Fig.10

Step. 5

Remove the tire from machine and clean the rubber particles and debris from inside the tire by blowing them with air.
(fig.9) & (fig.10)

Step. 6

Affix the tire back to machine.
(Repeat Step.1)

RHINO TIRE Operation Manual

CHAPTER TWO - Making Rhinotire



Fig. 1



Fig. 2



Fig. 3



Fig. 4



Fig. 5



Fig. 6



Fig. 7



Fig. 8



Fig. 9



Fig. 10

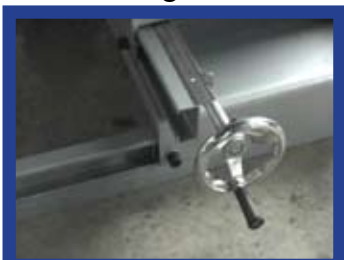


Fig. 11



Fig. 12

Step. 1

Turn power ON and worm up the machine for 15 min. or until temperature in all four indicators rise to 200 degrees and air pressure is between 0.6psi and 0.8psi. (fig. 2)

Step.2

Insert up to 5 dose of material (fig. 3) into the melting chamber. (fig. 4)

Step3.

Fix the dosage pin (fig. 5) to 1kg. mark (highest hole). Mix the glue by turning the stopcock knob (fig. 6) left (input air), put on neutral for 10 seconds, then turning right (release air) Repeat the process 3-4 times.

Step. 4

Screw the four holes hide cap (fig. 7) into the six holes sprayer (fig. 8).

Step.5

Using the slide and adjusting bolt (fig. 9) calibrate applicator (fig.10) exactly on center of the tire.

Step.6

Using the adjusting valve (fig. 11) affix the applicator 2.5 inches from inside wall of tire. (fig. 12)

RHINO TIRE

Operation Manual



Fig. 13

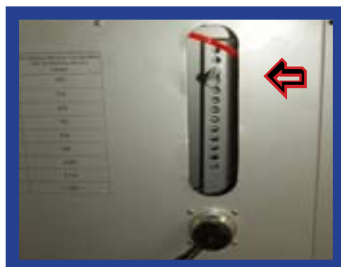


Fig. 14



Fig. 15



Fig. 16



Fig. 17



Fig. 18



Fig. 19



Fig. 20



Fig. 21



Fig. 22



Fig. 23



Fig. 24

Step. 7

Set dosage pin (fig.13) & (fig.14) to required dosage of material, according of the size of the tire (see chart).

Step. 8

Set the speed of the rotating tire to 15 rpm clockwise (Fig. 15). Turn the lower knob to the left then spray the material to the side-walls of the tire by turning the mixer knob to the left as well (Fig. 16). Make sure to hold the applicator in the affixed position.

Step. 9

Increase the rotation speed of the tire to maximum settings for 30 sec. Then decreased down to 15 rpm and let it spin to cool of for two minutes.

Step. 10

Remove four holes hide cap (Fig. 19) to expose the six holes nipple on the sprayer. (Fig. 20)

Step. 11

Calibrate the sprayer by move it one inch closer to inside bottom of the tire then affix it. (Fig. 21)

Step. 12

Set the dosage pin (Fig. 22) for the required dosage of material (see chart)

Step. 13

Set rotating speed to maximum (Fig. 23)

Step. 14

Spray tire with six holes nipple by turning lower knob to the left then mixer knob to the left (make sure to hold the applicator in the affixed position). Let it spin until cools.